

Kings adjust

New rules require different plan for Sacramento
SPORTS, B1



Paris Hilton imprisoned

Hotel heiress spends her first night in jail
ENTERTAINMENT, A11

Al-Qaida claims captured U.S. troops killed

WORLD, A8

ROUNABOUT ART

Rockville Road intersection home to new sculpture

BY BARRY EBERLING
DAILY REPUBLIC

FAIRFIELD — A 7-foot-tall bronze sculpture of Mother Earth with outstretched arms holding a rainbow now welcomes people to rural Suisun Valley.

The sculpture by artist Lisa Reinertson was installed Saturday in the roundabout at Abernathy and Rockville roads. It sits in the middle of

the circular section.

"When people see it, they're going to be so impressed," Solano County Supervisor John Vasquez said Monday. "It really is a gateway art piece. It's going to be very iconic, much like the statue of Solano is."

The bronze statue of Chief Solano, dedicated in 1934, stands in front of county buildings at

See Roundabout, Back Page



Mike McCoy/Daily Republic

County employees dig holes for the lighting of a new statue on the roundabout on Rockville Road.

HAY TRUCK TOPPLES, SNARLS I-80



Andrea E. Garcia/Daily Republic



Brad Zweerink/Daily Republic

Commuters were greeted with an early morning backup on westbound I-80 on Monday as an overturned truck congested three lanes with bales of hay.

At 6:34 a.m., west of West Texas Street, a 1999 Peterbilt big-rig was pulling a set of double-trailers loaded with hay on lane three. As the driver changed to lane four, he collided with a 2001 Nissan Pathfinder, causing the truck to lose control and overturn, according to the CHP.

There were no injuries reported. The Pathfinder was towed away.

"It's fortunate that no one was injured," said CHP Officer Craig Kuehl, who was at the scene.

Most of the lanes were closed for an hour, leading to miles of backup. By 7:40 a.m., as the big-rig remained on its side, two lanes opened, allowing traffic to slowly funnel through the debris.

— Andrea E. Garcia

Solano DA may charge Migden in Highway 12 crash

CHP says state senator at fault for reckless driving

BY BEN ANTONIUS
DAILY REPUBLIC

FAIRFIELD — The California Highway Patrol on Monday recommended reckless driving charges against State Sen. Carole Migden, D-San Francisco, who took an erratic 30-mile drive down Interstate 80 before slamming her state-owned vehicle into the back of another car last month.

The Solano County District Attorney's office is reviewing the report and will decide what, if any, charges to pursue "within seven to ten days, two weeks at the most," said Chief Deputy District Attorney Kathy Coffey.

The CHP also has asked the state Department of Motor Vehicles to reevaluate Migden's

fitness to drive, CHP Sgt. Les Bishop said.

Investigators determined Migden was at fault in two separate May 18 crashes in her 2007 Toyota Highlander Hybrid. After the incidents became public, Migden revealed that she was diagnosed with leukemia in 1997 and said medication she still takes daily may have been to blame.

In the first accident, Migden struck the median on eastbound I-80 near Redwood Parkway in Vallejo, the CHP said. Minutes later, her car rear-ended a 2005 Honda sedan that was slowing to a stop at a red light at the intersection of Beck Avenue and Highway 12 in Fairfield.

In the first crash, Migden made an "unsafe turning movement," Bishop said. In the second, she was traveling at an unsafe speed when she struck two other vehicles after

See Migden, Back Page

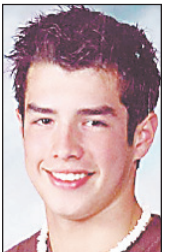


MIGDEN

Missing Vacaville teen may be headed to Seattle

BY BEN ANTONIUS
DAILY REPUBLIC

VACAVILLE — Investigators have turned their attention to the Seattle area in their hunt for a Vacaville teenager who went missing halfway through the school day on Friday.



ADLEY

Jon Carlos Adley, 15, missed his last three classes at Vacaville High School, apparently leaving town with his backpack and his stepfather's 2003 Saab Aero.

Police have entered Adley's information into the National Center for Missing and Exploited Children and have advised law enforcement agencies to look for the Saab. They do not believe he was taken against his will, Lt. Randy Weaver said.

"We can't discount either

possibility, but we're working on the suspicion that he took his parents' car without their consent," he said.

Police initially said he might be headed to his father's home in San Gabriel in Southern California, but he had not arrived as of Monday morning. Police said his home computer contained travel plans to Seattle.

"He could be headed out of state to Washington (state) or he could be headed to his father's, but obviously he could be anywhere in between those locations or another location," Weaver said.

Adley is described as a 5-foot-8 white male with brown hair, brown eyes and a fair complexion. He weighs about 145 pounds. The car is a white Saab Aero with license plate number 5EEW682.

Anyone with information can contact the Vacaville Police Department at 449-5200.

Judges at Guantanamo throw out 2 cases

Reversal a setback for White House

BY ANDREW O. SELSKY
THE ASSOCIATED PRESS



KHADR

GUANTANAMO BAY NAVAL BASE, Cuba — Military judges dismissed charges Monday against a Guantanamo detainee accused of chauffeuring Osama bin Laden and another

who allegedly killed a U.S. soldier in Afghanistan, throwing up roadblocks to the Bush administration's attempt to try terror suspects in military courts.

In back-to-back arraignments for Salim Ahmed Hamdan of Yemen and Canadian Omar Khadr the U.S. military's cases against the alleged al-Qaida figures dissolved because, the two judges said, the government had failed to establish jurisdiction.

They were the only two of the roughly 380 prisoners at Guantanamo charged with crimes, and the rulings stand to complicate efforts by the United States to try other suspected al-Qaida and Taliban figures in military courts.

Hamdan's military judge, Navy Capt. Keith Allred, said the detainee is "not subject to this commission" under legislation passed by Congress and signed by President Bush last year. Hamdan is ac-

See Guantanamo, Back Page

JFK plot shows dangers of mundane terror targets

BY TOM HAYS
THE ASSOCIATED PRESS

NEW YORK — Until a suspected terrorist plot was revealed, few people even knew there was a pipeline of highly combustible jet fuel snaking beneath the nation's largest city.

But authorities said Monday that it's one of countless lesser-known targets — including waterway retaining walls,

dingy rail yards and tunnel ventilation systems — that they struggle to protect from attacks.

New York police spend "considerable time and resources protecting the landmarks nearly everyone would recognize as emblematic of New York and America," Police Commissioner Raymond Kelly said. "But we also protect the anonymous, unheralded elements of infrastructure

that are essential to the life of the city."

Police were aware that the fuel system feeding John F. Kennedy International Airport posed a risk well before investigators unearthed an alleged conspiracy by a home-grown Muslim terror cell to blow it up, with the goal of killing thousands of people and inflicting major damage on the U.S. economy.

Pipeline networks don't

carry the stature of sites such as Wall Street, the Empire State Building and the Statue of Liberty, so the general public doesn't give them much notice.

But, said Kelly McCann, president of Kroll Security Group and a former Marine officer assigned to counterterrorism duty, said authorities "think about them every day.

See Targets, Back Page

INDEX

Bridge B12
Business B7
Classifieds B8
Columns A10

Comics B6
Crime Logs A2
Crossword B12
Entertainment A11

Movies A11
Opinion A12
Sports B1
TV Daily A10

WEATHER



Windy and cool.
Look for a high of 75 and a low of 49.
Page B14

HOW TO REACH US

Breaking news updates
at dailyrepublic.com

Want to subscribe? . 427-6989



8 50868 00121 9